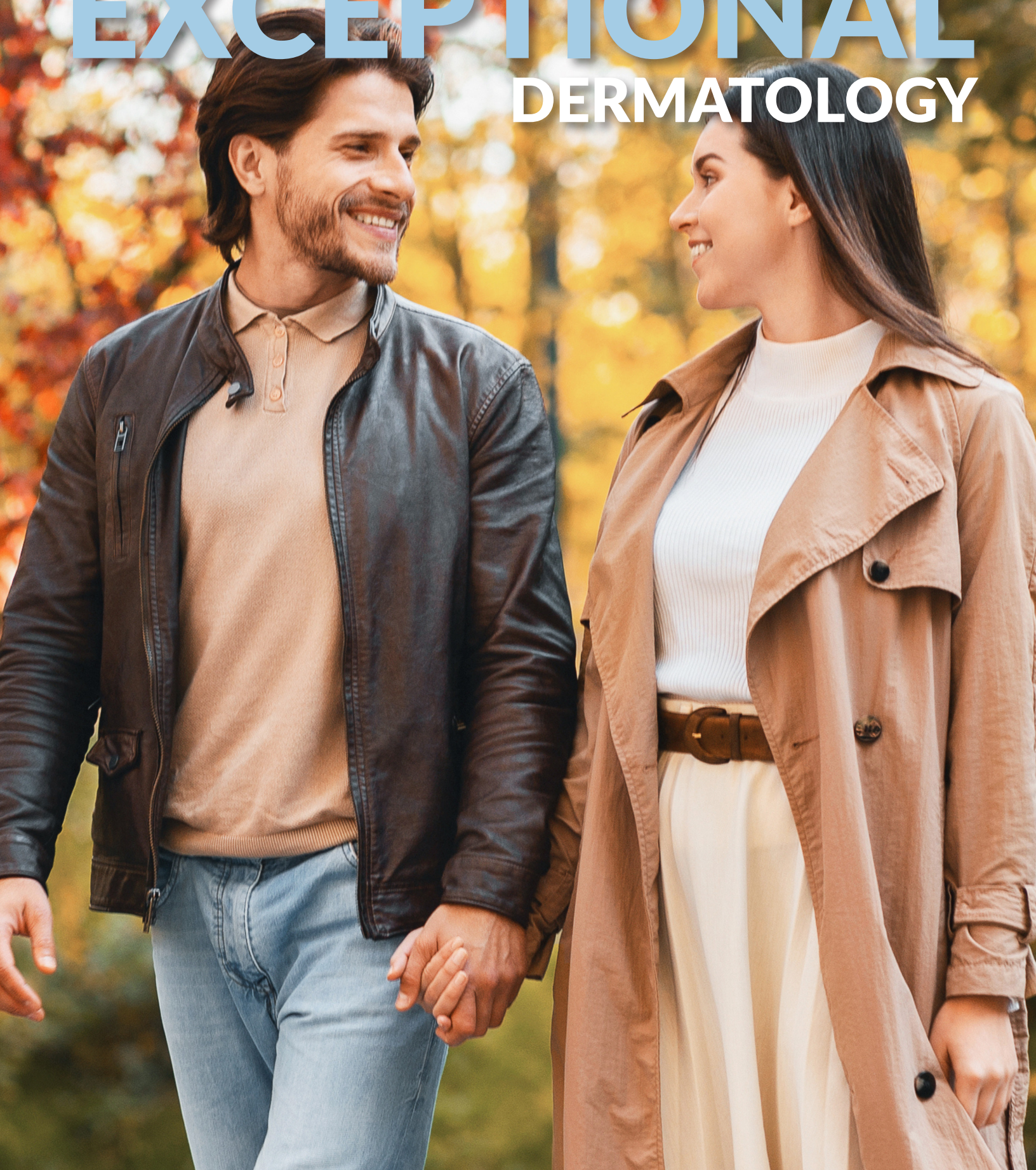


NOVEMBER 2024

# EXCEPTIONAL DERMATOLOGY





# EXCEPTIONAL

DERMATOLOGY CARE

## TABLE OF CONTENTS

|  |        |
|--|--------|
| Rediscover Your Natural Glow with Sculptra                   | Pg. 2  |
| Get Radiant Skin with Vivace Ultra RF Microneedling          | Pg. 6  |
| Can Laundry Detergent Be the Hidden Trigger for Your Eczema? | Pg. 11 |

We'd love to hear your feedback, so we can continue to improve our service to you.

For questions or comments, please send us an email to [liz@exceptionaldermatology.com](mailto:liz@exceptionaldermatology.com)

## CONTACT

2720 N Harbor Blvd Ste. 205

Fullerton, CA 92835

(714) 882-5525

[www.exceptionaldermatology.com](http://www.exceptionaldermatology.com)



# Rediscover Your Natural Glow with Sculptra

In today's world of aesthetic treatments, the quest for youthful skin that feels natural is more prevalent than ever. Among the myriad of options available, Sculptra stands out as a groundbreaking solution designed to help you achieve skin that feels like you again. This innovative biostimulatory injectable is not just about smoothing wrinkles; it's about revitalizing your natural collagen production for long-lasting results. Whether you're new to cosmetic treatments or exploring new ways to maintain your skin's vitality, understanding Sculptra can be a game-changer in your skincare regimen.

## What is Sculptra and How Does It Work?

Sculptra is an FDA-approved injectable that stimulates your skin's own natural

collagen production. Unlike other dermal fillers that provide immediate volume by adding substances beneath the skin, Sculptra works gradually over time. It contains poly-L-lactic acid (PLLA), a biodegradable substance that encourages the body to rebuild lost collagen. This process not only restores fullness to facial features but also enhances skin texture, providing a subtle and natural-looking rejuvenation.

The magic of Sculptra lies in its ability to work from within, promoting your body's intrinsic healing mechanisms. Over a series of treatments, typically spaced several weeks apart, Sculptra helps restore the structural integrity of your skin. This gradual transformation means results are subtle yet profound, unfolding over time for a refreshed and youthful appearance without the "overdone" look.

### **The Benefits of Collagen Stimulation**

Collagen is a key protein that maintains the skin's firmness and elasticity. As we age, collagen production naturally decreases, leading to sagging skin and the formation of wrinkles. Sculptra addresses this by directly stimulating collagen growth, offering several benefits beyond traditional fillers.

Firstly, the results are long-lasting. While many fillers require frequent touch-ups, Sculptra's effects can last up to two years, making it a cost-effective option over time. Secondly, because it

works gradually, Sculptra provides a more natural enhancement, allowing you to maintain your unique facial expressions and character. Finally, by enhancing collagen production, Sculptra not only fills wrinkles but also improves overall skin quality, leaving it smoother and more resilient.

### **Who Can Benefit from Sculptra?**

Sculptra is an ideal choice for individuals seeking a natural-looking rejuvenation without resorting to surgery. It's particularly beneficial for those experiencing age-related volume loss in areas such as the cheeks, temples, and jawline. It's also suitable for those who have noticed a decline in skin elasticity and firmness, or who wish to prevent further aging signs proactively.

That said, Sculptra is not limited to older adults. Younger individuals can also benefit from its preventive properties, using it to delay the onset of aging signs. Furthermore, because Sculptra encourages the body to produce its



own collagen, it's a versatile treatment that can be tailored to a wide range of skin types and cosmetic goals.

## **The Sculptra Treatment Process**

The Sculptra treatment process begins with a thorough consultation with a qualified healthcare provider. During this session, your provider will assess your skin concerns, discuss your aesthetic goals, and develop a personalized treatment plan. This ensures that the results align with your expectations and suit your individual needs.

Sculptra is administered through a series of small injections into the deep dermis layer of the skin. The procedure typically takes about 30 to 60 minutes, depending on the areas being treated. To minimize discomfort, your provider may apply a topical anesthetic. Following the injections, it's crucial to massage the treated areas regularly over the next few days to ensure even distribution of the product.

## **What to Expect After Sculptra**

Post-treatment, you might notice some immediate swelling or redness, but this typically subsides within a few days. Unlike other fillers, you won't see immediate results from Sculptra. Instead, improvements will become noticeable over the following weeks as your body gradually produces more collagen.

Patients often appreciate the gradual

enhancement, as it allows for a more natural transition in appearance. Typically, optimal results are achieved after a series of three or more sessions spaced several weeks apart. The cumulative effect is a naturally rejuvenated appearance that can last up to two years, providing both immediate and enduring benefits.

## **Sculptra vs. Other Dermal Fillers**

When comparing Sculptra to other dermal fillers, the most significant difference lies in its mechanism of action. Traditional fillers instantly add volume by inserting hyaluronic acid or other substances under the skin. While these can provide immediate results, they do not address the underlying cause of volume loss, which is the depletion of collagen.

Sculptra, on the other hand, works with your body to stimulate its own collagen production. This means that while the initial effects aren't seen immediately, the results are longer-lasting and more natural. Additionally, because Sculptra enhances overall skin quality, it offers comprehensive rejuvenation rather than simply filling lines and wrinkles.

## **Safety and Effectiveness of Sculptra**

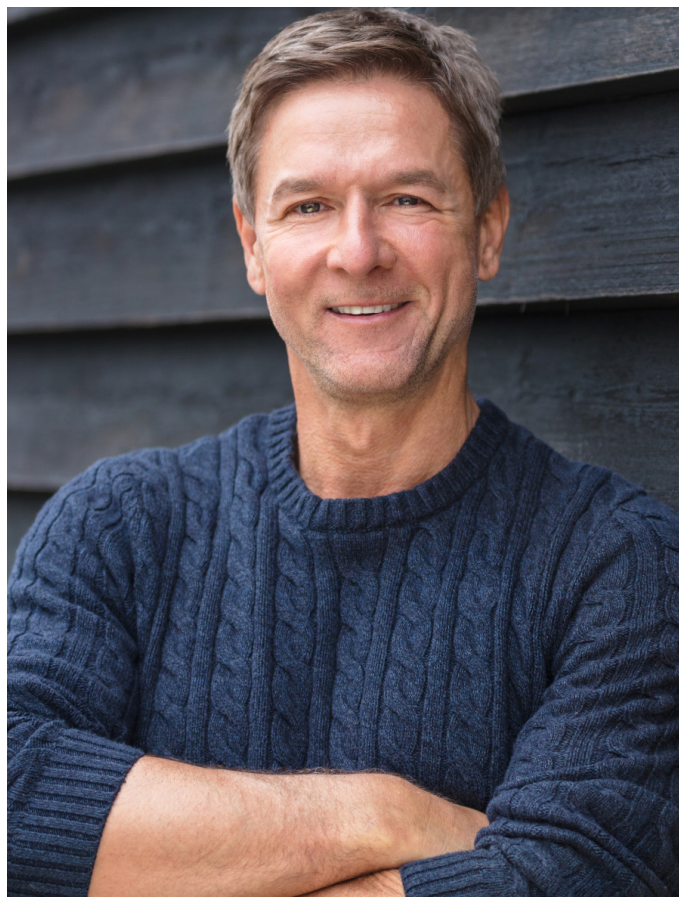
Safety is a paramount concern when considering any cosmetic treatment. Sculptra has been extensively studied and proven to be both safe and effective. Its active ingredient, poly-L-lactic

acid, has been used in medical applications for decades due to its biocompatibility and biodegradability.

Common side effects include swelling, redness, and tenderness at the injection site, all of which are temporary. More serious complications are rare but can be mitigated by choosing an experienced practitioner. When performed by a qualified professional, Sculptra offers a reliable and effective way to enhance your skin's natural beauty.

### **Maintaining Your Results with Sculptra**

Once you've achieved your desired results with Sculptra, maintaining them involves a combination of proper skincare and lifestyle choices. Protect your



skin from sun damage by wearing sunscreen daily, as UV exposure can accelerate collagen breakdown. Incorporate a moisturizer and retinoid into your skincare routine to keep your skin hydrated and promote cell turnover.

Additionally, consider periodic maintenance treatments with Sculptra to sustain your results. Your provider can guide you on the optimal timing for touch-ups based on your individual skin response and aging process. By committing to a comprehensive skincare regimen, you can enjoy the benefits of Sculptra for years to come.

Sculptra offers a unique approach to facial rejuvenation by leveraging your body's natural processes to restore youthful vitality. For those seeking a natural-looking solution to aging, Sculptra provides gradual, long-lasting results that enhance more than just appearance—they renew confidence. Whether you're looking to reverse the signs of aging or maintain a youthful glow, Sculptra presents a promising option.

This month, **purchase 3 vials of Sculptra and receive 1 vial free.** If you're interested in exploring what Sculptra can do for you, consult with one of our qualified providers to tailor a treatment plan that suits your needs. Remember, radiant, youthful skin that feels like you again is just a step away, and Sculptra could be the key to unlocking that transformation.



# Get Radiant Skin with Vivace Ultra RF Microneedling

In the world of skincare, everyone is on the lookout for the next big thing that promises to deliver radiant, youthful skin. If you've been exploring advanced treatments to improve and restore your skin texture, look no further than Vivace Ultra RF Microneedling. This cutting-edge procedure offers industry-first ultrasound visualization coupled with unmatched precision, making it the most recognized radiofrequency microneedling experience available today. Catering to people of all skin tones and providing tailored treatment plans, Vivace Ultra is here to revolutionize your skincare routine.

## What is Vivace Ultra RF Microneedling?

Vivace Ultra RF Microneedling is a state-of-the-art skin treatment that combines the power of radiofrequency (RF) energy with microneedling techniques. This



innovative technology not only treats the surface of the skin but also penetrates deeper layers to stimulate collagen production and improve overall skin texture.

The procedure involves the use of fine needles to create micro-injuries in the skin. These controlled injuries prompt the body's natural healing process, leading to the production of new collagen and elastin. Radiofrequency energy further enhances the results by heating the underlying layers of skin, promoting tighter, smoother, and more youthful-looking skin.

## The Benefits of Vivace Ultra

Vivace Ultra offers a myriad of benefits, making it a popular choice among skin-care enthusiasts. Whether you're dealing with fine lines, wrinkles, acne scars, or uneven skin tone, Vivace Ultra provides a comprehensive solution. Here are some key benefits:

**Enhanced Precision:** With industry-first ultrasound visualization, Vivace Ultra ensures precise targeting of treatment areas, maximizing effectiveness.

**Tailored Treatment Plans:** Every individual has unique skin concerns. Vivace Ultra offers customized plans to address specific needs, providing optimal results.

**Colorblind Versatility:** Unlike some treatments that may not be suitable for all skin tones, Vivace Ultra is versatile and effective for every skin type.

## How Does Vivace Ultra Work?

The magic behind Vivace Ultra lies in its combination of microneedling and radiofrequency energy. During the procedure, tiny needles create microchannels in the skin. These microchannels allow radiofrequency energy to penetrate deeper layers, stimulating collagen and elastin production.

The ultrasound visualization technology ensures that the energy is delivered precisely where it's needed, enhancing the treatment's overall effectiveness. This combination of microneedling and RF energy results in smoother, tighter, and rejuvenated skin.

## The Science Behind RF Microneedling

Radiofrequency microneedling is a powerful technique backed by scientific research. The controlled micro-injuries created by the needles trigger the body's



natural wound-healing response, leading to increased collagen production. Collagen is a crucial protein that provides structure and elasticity to the skin, giving it a youthful appearance.

Radiofrequency energy further amplifies the benefits by heating the deeper layers of the skin. This heat stimulates collagen remodeling and tightens the skin, resulting in a firmer and more lifted look. The combination of these two technologies makes RF microneedling a highly effective treatment for a wide range of skin concerns.

### What to Expect During the Procedure

If you're considering Vivace Ultra RF Microneedling, it's essential to know what to expect during the procedure. Here's a step-by-step overview:

**Consultation:** Your skincare provider will assess your skin and discuss your goals to create a personalized treatment plan.



**Preparation:** The treatment area will be cleaned, and a numbing cream may be applied to ensure your comfort.

**Microneedling:** The Vivace Ultra device will be used to create micro-injuries in the skin while delivering RF energy to deeper layers.

**Post-Treatment Care:** Your provider will give you specific aftercare instructions to optimize your results and minimize any side effects.

### The Role of Ultrasound Visualization

One of the standout features of Vivace Ultra is its industry-first ultrasound visualization technology. This advanced feature allows skincare professionals to see beneath the surface of the skin, ensuring precise delivery of RF energy to targeted areas. By visualizing the treatment area in real-time, providers can customize the procedure to address your specific concerns effectively.

Ultrasound visualization also enhances safety by avoiding sensitive structures and minimizing the risk of complications. This level of precision sets Vivace Ultra apart from other RF microneedling treatments, making it a preferred choice for achieving optimal results.

### Tailored Treatment Plans for Every Skin Type

Vivace Ultra understands that every individual's skin is unique. That's why the

treatment offers tailored plans to address specific concerns, whether you're dealing with fine lines, wrinkles, acne scars, or uneven skin texture. By customizing the procedure to your needs, Vivace Ultra ensures that you achieve the best possible results.

During your consultation, your provider will assess your skin type and discuss your goals. Based on this assessment, they will create a personalized treatment plan that may include a series of sessions to achieve your desired outcome. This tailored approach ensures that you receive the most effective and safe treatment for your skin.

### **The Importance of Collagen Stimulation**

Collagen is the foundation of youthful skin. It's a protein that provides structure, firmness, and elasticity. However, as we age, collagen production naturally declines, leading to the development of fine lines, wrinkles, and sagging skin. Vivace Ultra RF Microneedling addresses this issue by stimulating collagen production. The micro-injuries created by the needles trigger the body's natural healing response, which includes the production of new collagen. The addition of radiofrequency energy enhances this process, promoting collagen remodeling and tightening the skin.

### **Minimally Invasive with Minimal Downtime**

One of the significant advantages of

Vivace Ultra RF Microneedling is that it's minimally invasive. Unlike surgical procedures that require extensive downtime, Vivace Ultra allows you to return to your daily activities quickly.

Most individuals experience mild redness and swelling immediately after the treatment, but these side effects typically subside within a few days. Your provider will give you specific aftercare instructions to ensure a smooth recovery and optimal results. With minimal downtime, Vivace Ultra is a convenient option for those with busy lifestyles.

### **Comparing Vivace Ultra to Other Treatments**

While there are various skincare treatments available, Vivace Ultra RF Microneedling stands out for several reasons. Here's how it compares to other popular treatments:

**Chemical Peels:** While chemical peels exfoliate the skin, they may not provide the same level of collagen stimulation and tightening as Vivace Ultra. RF microneedling goes deeper, offering more comprehensive results.

**Traditional Microneedling:** Standard microneedling lacks the added benefits of radiofrequency energy. Vivace Ultra's combination of microneedling and RF ensures more significant improvements in skin texture and firmness.

**Laser Resurfacing:** Laser treatments can

be effective but often involve longer downtime and potential risks of hyperpigmentation. Vivace Ultra's minimally invasive nature and ultrasound visualization make it a safer option for many individuals.

## Is Vivace Ultra Right for You?

If you're considering Vivace Ultra RF Microneedling, you may wonder if it's the right treatment for you. The good news is that Vivace Ultra is suitable for a wide range of skin types and concerns.

Whether you're looking to reduce the appearance of fine lines, improve skin texture, or address acne scars, Vivace Ultra can help. However, it's essential to consult with a skincare provider to determine if this treatment aligns with your specific goals and needs.

## Taking the Next Step

Ready to experience the benefits of Vivace Ultra RF Microneedling? The first step is to schedule a consultation with a trusted skincare professional. During this consultation, you'll have the opportunity to discuss your goals, receive a thorough skin assessment, and learn more about the treatment process.

Your provider will create a personalized treatment plan tailored to your unique needs, ensuring that you achieve the best possible results. Take the next step towards radiant, youthful skin with Vivace Ultra.



Vivace Ultra RF Microneedling offers a revolutionary solution for improving and restoring skin texture. With its combination of microneedling, radiofrequency energy, and ultrasound visualization, this treatment provides unmatched precision and effectiveness.

By stimulating collagen production and promoting skin tightening, Vivace Ultra helps you achieve smoother, firmer, and more youthful-looking skin. Whether you're dealing with fine lines, wrinkles, acne scars, or uneven skin tone, Vivace Ultra can address your concerns and provide lasting results.

This month, **purchase 3 Full Face Vivace Ultra RF Microneedling treatments and receive 3 Neck treatments free.** Don't wait any longer to experience the benefits of Vivace Ultra RF Microneedling. Schedule your consultation today and take the first step towards radiant, glowing skin. Discover the future of skincare with Vivace Ultra.



# Can Laundry Detergent Be the Hidden Trigger for Your Eczema?

Eczema, an itchy reality for many, can be an unwelcome surprise in more ways than one. But have you considered that what comes out of your washing machine could be part of the problem? This article explores the surprising relationship between laundry detergent and eczema, a skin condition affecting millions worldwide. We will break down how detergents might trigger eczema flare-ups, the difference between atopic and contact dermatitis, and how to manage these concerns effectively. Whether you or a loved one struggles with eczema, or you're simply keen to learn how everyday products impact our health, this guide is for you.

## Understanding Eczema and Its Causes

Eczema, or dermatitis, is a group of skin conditions that results in inflamed, itchy

skin. It commonly affects the hands, elbows, and knees but can appear anywhere on the body. While the exact cause isn't fully understood, genetics, the immune system, and environmental factors like allergens and irritants often play significant roles.

The most prevalent form of eczema is atopic dermatitis, which is chronic and often linked with other allergic conditions such as hay fever and asthma. Unlike atopic dermatitis, contact dermatitis happens when the skin directly encounters an irritant or allergen, causing temporary inflammation. Understanding these two types is crucial in managing and preventing flare-ups.

Eczema symptoms can vary, including redness, swelling, itching, and sometimes blisters. Triggers can be both internal, like stress, and external, such as harsh chemicals found in various household products, including laundry detergents.



## The Role of Laundry Detergent in Eczema Flare-ups

Laundry detergents are designed to remove dirt and stains from our clothes, but they often contain harsh chemicals that can irritate sensitive skin. Ingredients like fragrances, dyes, and certain preservatives can wreak havoc on those susceptible to eczema.

During the washing process, residues from these detergents can linger in clothing fibers and come into direct contact with the skin, potentially causing irritation or an allergic reaction. Understanding the components of your laundry detergent can be a vital step in managing eczema effectively.

For those with sensitive skin or a history of eczema, choosing the right detergent is crucial. Hypoallergenic detergents are formulated to minimize irritation, making them a safer choice for eczema sufferers.

## Distinguishing Atopic and Contact Dermatitis

Atopic dermatitis is a chronic condition often influenced by genetic factors and immune system responses. It can flare up periodically and might require ongoing management to control symptoms. Unlike contact dermatitis, it's not usually triggered by direct contact with an irritant.

Conversely, contact dermatitis arises



after direct exposure to an irritant or allergen. Once the source of irritation is removed, symptoms usually subside. This type of dermatitis is particularly relevant when discussing laundry detergent as a potential trigger.

Knowing the difference between these two can help in diagnosing and treating eczema accurately. While both share common symptoms, their management strategies can differ significantly.

### **Identifying Irritants in Laundry Detergents**

Many laundry detergents contain a cocktail of chemicals designed to clean effectively but can act as irritants for sensitive skin. Common culprits include sulfates, which create lather but can strip moisture from the skin, and fragrances, which add scent but can be especially irritating.

In addition to these, optical brighteners, used to enhance the appearance of

clothing, can also cause skin irritation. These chemicals can remain on clothing and come in contact with the skin throughout the day.

Checking the ingredient list on detergent packaging can help identify potentially harmful components. Opting for fragrance-free, dye-free, and hypoallergenic options can significantly reduce the risk of eczema flare-ups.

### **The Science Behind Detergent Allergies**

Detergent allergies occur when the immune system overreacts to certain chemical compounds in detergent. This response can lead to contact dermatitis, where affected areas become red, inflamed, and itchy.

The mechanism involves the immune system identifying specific substances as threats, prompting a defensive reaction. This is why symptoms can appear rapidly after exposure, highlighting the importance of identifying and avoiding known allergens.

Understanding this process is beneficial for eczema sufferers, as it emphasizes the need for careful selection of household products and aids in developing better management strategies.

### **Symptoms of Detergent-Induced Eczema**

Those experiencing eczema due to

detergent exposure might notice symptoms like redness, itching, and a rash developing shortly after wearing freshly laundered clothes. In severe cases, blistering and oozing can occur.

These symptoms often worsen in areas where the fabric rubs against the skin, such as at the waistline or underarm. It's crucial to monitor any correlation between laundry cycles and flare-ups.

By paying attention to these signs, individuals can better identify detergent as a potential trigger and take steps to mitigate exposure, such as switching to gentler products.

### **Choosing the Right Detergent for Eczema-Prone Skin**

Selecting the right detergent can make a significant difference for those with eczema. Look for products labeled as hypoallergenic, free from dyes and fragrances, and specifically designed for sensitive skin.

Many brands offer detergent lines that cater to these needs, reducing the risk of irritant exposure. Additionally, some natural detergents use plant-based ingredients, which might be less harsh on the skin.

Trial and error can be necessary to find the perfect match. Keeping track of detergent types and any corresponding skin reactions can help pinpoint the best option for eczema management.

### **The Importance of Patch Testing**

Patch testing can be a useful tool for identifying specific triggers, including laundry detergents. This involves applying a small amount of detergent to a patch of skin to observe any reaction. If the skin becomes red or irritated after exposure, it's a strong indicator that the detergent may contribute to eczema flare-ups. This method helps confirm the need to switch products or seek alternatives.

Consulting with a healthcare provider at Exceptional Dermatology Care can provide more information on how to perform patch testing safely and interpret results accurately. They can also provide guidance on avoiding triggers and developing a skincare routine tailored to your needs. This can be particularly beneficial for chronic cases that don't respond well to over-the-counter solutions.

Laundry detergents can indeed trigger eczema in susceptible individuals, exacerbating symptoms or causing flare-ups. Understanding the role of detergents in skin health and selecting the right products can significantly improve quality of life for those affected. By integrating the tips and insights shared here, you can better manage eczema and enjoy healthier, happier skin. Always consider consulting with a healthcare provider for personalized advice and treatment options, as they can provide valuable support in your skincare journey.